

BOUNDARY DESCRIPTIONS

**R-1-10 PARCEL DESCRIPTION:**

BEGINNING AT A POINT THAT LIES SOUTH 89°14'29" EAST ALONG THE EAST CENTER QUARTER SECTION LINE 395.68 FEET AND SOUTH 515.00 FEET FROM THE CENTER QUARTER CORNER OF SECTION 2, TOWNSHIP 43 SOUTH, RANGE 15 WEST, SALT LAKE BASE AND MERIDIAN AND RUNNING THENCE SOUTHEASTERLY ALONG A 150.00 FOOT RADIUS NON-TANGENT CURVE TO THE LEFT, (LONG CHORD BEARS SOUTH 30°10'16" EAST A DISTANCE OF 47.56 FEET), CENTER POINT LIES NORTH 68°57'05" EAST THROUGH A CENTRAL ANGLE OF 18°14'42", A DISTANCE OF 47.77 FEET, THENCE SOUTHERLY ALONG A 150.00 FOOT RADIUS REVERSE CURVE TO THE RIGHT, (LONG CHORD BEARS SOUTH 19°16'35" EAST A DISTANCE OF 102.69 FEET), CENTER POINT LIES SOUTH 50°42'23" WEST THROUGH A CENTRAL ANGLE OF 40°02'04", A DISTANCE OF 104.81 FEET, THENCE SOUTH 00°44'27" WEST 1815.10 FEET, THENCE SOUTH 89°15'33" EAST 118.00 FEET, THENCE NORTH 00°44'27" EAST 52.05 FEET, THENCE SOUTH 89°15'33" EAST 116.80 FEET, THENCE NORTH 48°26'46" EAST 39.58 FEET, THENCE SOUTH 52°54'03" EAST 96.21 FEET, THENCE NORTH 37°05'57" EAST 703.34 FEET, THENCE NORTHEASTERLY ALONG A 400.00 FOOT RADIUS CURVE TO THE LEFT, (LONG CHORD BEARS NORTH 22°58'48" EAST A DISTANCE OF 195.15 FEET), CENTER POINT LIES NORTH 52°54'03" WEST THROUGH A CENTRAL ANGLE OF 28°14'17", A DISTANCE OF 197.14 FEET, THENCE SOUTH 81°08'21" EAST 192.53 FEET, THENCE SOUTH 31°14'55" WEST 45.82 FEET, THENCE SOUTH 22°29'42" WEST 216.98 FEET, THENCE SOUTH 35°23'23" WEST 80.07 FEET, THENCE SOUTH 30°59'36" WEST 102.67 FEET, THENCE SOUTH 26°35'00" WEST 46.95 FEET, THENCE SOUTH 37°27'56" WEST 75.28 FEET, THENCE SOUTH 40°52'24" WEST 79.92 FEET, THENCE SOUTH 55°01'45" WEST 144.63 FEET, THENCE SOUTH 37°05'57" WEST 160.97 FEET, THENCE SOUTH 34°01'34" WEST 157.75 FEET, THENCE SOUTH 30°00'00" WEST 49.69 FEET, THENCE NORTH 88°55'08" WEST 857.73 FEET, THENCE NORTH 01°03'05" EAST 1667.19 FEET, THENCE NORTHEASTERLY ALONG A 730.00 FOOT RADIUS NON-TANGENT CURVE TO THE RIGHT, (LONG CHORD BEARS NORTH 40°40'16" EAST A DISTANCE OF 635.31 FEET), CENTER POINT LIES SOUTH 75°07'24" EAST THROUGH A CENTRAL ANGLE OF 51°35'19", A DISTANCE OF 657.28 FEET, TO THE POINT OF BEGINNING.

CONTAINING 1,210,580 SQUARE FEET OR 27.79 ACRES.

**R-1-8 PARCEL DESCRIPTION:**

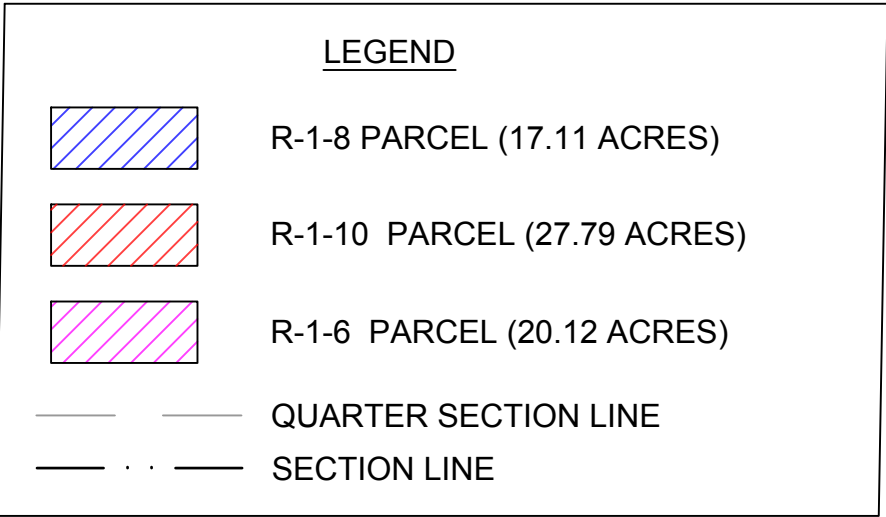
BEGINNING AT A POINT THAT LIES SOUTH 89°14'29" EAST ALONG THE EAST CENTER QUARTER SECTION LINE 395.68 FEET AND SOUTH 515.00 FEET FROM THE CENTER QUARTER CORNER OF SECTION 2, TOWNSHIP 43 SOUTH, RANGE 15 WEST, SALT LAKE BASE AND MERIDIAN AND RUNNING THENCE EASTERLY ALONG A 730.00 FOOT RADIUS NON-TANGENT CURVE TO THE RIGHT, (LONG CHORD BEARS NORTH 78°35'38" EAST A DISTANCE OF 306.75 FEET), CENTER POINT LIES SOUTH 23°32'05" EAST THROUGH A CENTRAL ANGLE OF 24°15'25", A DISTANCE OF 309.06 FEET, THENCE SOUTH 89°16'40" EAST 40.70 FEET, THENCE SOUTH 00°44'27" WEST 745.76 FEET, THENCE SOUTH 00°44'27" WEST 196.00 FEET, THENCE SOUTH 14°14'12" WEST 51.42 FEET, THENCE SOUTH 00°44'27" WEST 204.19 FEET, THENCE SOUTH 21°03'38" EAST 70.01 FEET, THENCE SOUTH 00°44'27" WEST 93.00 FEET, THENCE SOUTH 89°15'33" EAST 507.03 FEET, THENCE SOUTHWESTERLY ALONG A 400.00 FOOT RADIUS NON-TANGENT CURVE TO THE RIGHT, (LONG CHORD BEARS SOUTH 30°52'55" WEST A DISTANCE OF 86.64 FEET), CENTER POINT LIES NORTH 65°20'07" WEST THROUGH A CENTRAL ANGLE OF 12°26'04", A DISTANCE OF 86.81 FEET, THENCE SOUTH 37°05'57" WEST 703.34 FEET, THENCE NORTH 52°54'03" WEST 96.21 FEET, THENCE SOUTH 48°26'46" WEST 39.58 FEET, THENCE NORTH 89°15'33" WEST 116.80 FEET, THENCE SOUTH 00°44'27" WEST 52.05 FEET, THENCE NORTH 89°15'33" WEST 118.00 FEET, THENCE NORTH 00°44'27" EAST 1815.10 FEET, THENCE NORTHERLY ALONG A 150.00 FOOT RADIUS CURVE TO THE LEFT, (LONG CHORD BEARS NORTH 19°16'35" WEST A DISTANCE OF 102.69 FEET), CENTER POINT LIES NORTH 89°15'33" WEST THROUGH A CENTRAL ANGLE OF 40°02'04", A DISTANCE OF 104.81 FEET, THENCE NORTHWESTERLY ALONG A 150.00 FOOT RADIUS REVERSE CURVE TO THE RIGHT, (LONG CHORD BEARS NORTH 30°10'16" WEST A DISTANCE OF 47.56 FEET), CENTER POINT LIES NORTH 50°42'23" EAST THROUGH A CENTRAL ANGLE OF 18°14'42", A DISTANCE OF 47.77 FEET, TO THE POINT OF BEGINNING.

CONTAINING 745,314 SQUARE FEET OR 17.11 ACRES.

**R-1-6 PARCEL DESCRIPTION:**

BEGINNING AT A POINT THAT LIES SOUTH 89°14'29" EAST ALONG THE EAST CENTER QUARTER SECTION LINE 1432.11 FEET AND SOUTH 449.88 FEET FROM THE CENTER QUARTER CORNER OF SECTION 2, TOWNSHIP 43 SOUTH, RANGE 15 WEST, SALT LAKE BASE AND MERIDIAN AND RUNNING THENCE SOUTHERLY ALONG A 150.00 FOOT RADIUS NON-TANGENT CURVE TO THE LEFT, (LONG CHORD BEARS SOUTH 18°45'08" EAST A DISTANCE OF 100.11 FEET), CENTER POINT LIES SOUTH 89°15'33" EAST THROUGH A CENTRAL ANGLE OF 38°59'11", A DISTANCE OF 102.07 FEET, THENCE SOUTH 38°14'43" EAST 143.22 FEET, THENCE SOUTH 51°45'17" WEST 195.37 FEET, THENCE SOUTHWESTERLY ALONG A 300.00 FOOT RADIUS CURVE TO THE LEFT, (LONG CHORD BEARS SOUTH 26°14'52" WEST A DISTANCE OF 258.37 FEET), CENTER POINT LIES SOUTH 38°14'43" EAST THROUGH A CENTRAL ANGLE OF 40°02'04", A DISTANCE OF 104.81 FEET, THENCE SOUTH 00°44'27" WEST 231.19 FEET, THENCE SOUTHERLY ALONG A 400.00 FOOT RADIUS CURVE TO THE RIGHT, (LONG CHORD BEARS SOUTH 12°42'10" WEST A DISTANCE OF 165.81 FEET), CENTER POINT LIES NORTH 89°15'33" WEST THROUGH A CENTRAL ANGLE OF 23°55'25", A DISTANCE OF 167.02 FEET, THENCE NORTH 89°15'33" WEST 507.03 FEET, THENCE NORTH 00°44'27" EAST 93.00 FEET, THENCE NORTH 21°03'38" WEST 70.01 FEET, THENCE NORTH 00°44'27" EAST 204.19 FEET, THENCE NORTH 14°14'12" EAST 51.42 FEET, THENCE NORTH 00°44'27" EAST 196.00 FEET, THENCE NORTH 00°44'27" EAST 745.76 FEET, THENCE SOUTH 89°16'40" EAST 695.00 FEET, TO THE POINT OF BEGINNING.

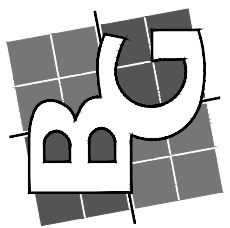
CONTAINS 876,624 SQUARE FEET OR 20.12 ACRES



ZONE CHANGE EXHIBIT

LOCATED IN  
SOUTHEAST 1/4 OF SECTION 2, TOWNSHIP 43 SOUTH, RANGE 15 WEST,  
SALT LAKE BASE AND MERIDIAN

**BUSH & GUDGELL, INC.**  
Engineers - Planners - Surveyors  
205 East Tabernash Suite #4  
St. George, Utah 84770  
Phone (435) 673-3161  
www.bushandgudgell.com



Drawn : CEW/BRS Date : 06/05/20  
Email : greg@bushandgudgell.com  
Checked : DGM  
Approved : DGM  
Scale : 1" = 150'  
Job No. : 191218

**ZONE CHANGE EXHIBIT**  
LOCATED IN  
SE 1/4 CORNER OF SECTION 2, T-43-S, R-15-W, SLB&M  
WASHINGTON, UT

SHEET  
1  
SHEETS  
1  
FILE: 191218 ZONE CHANGE